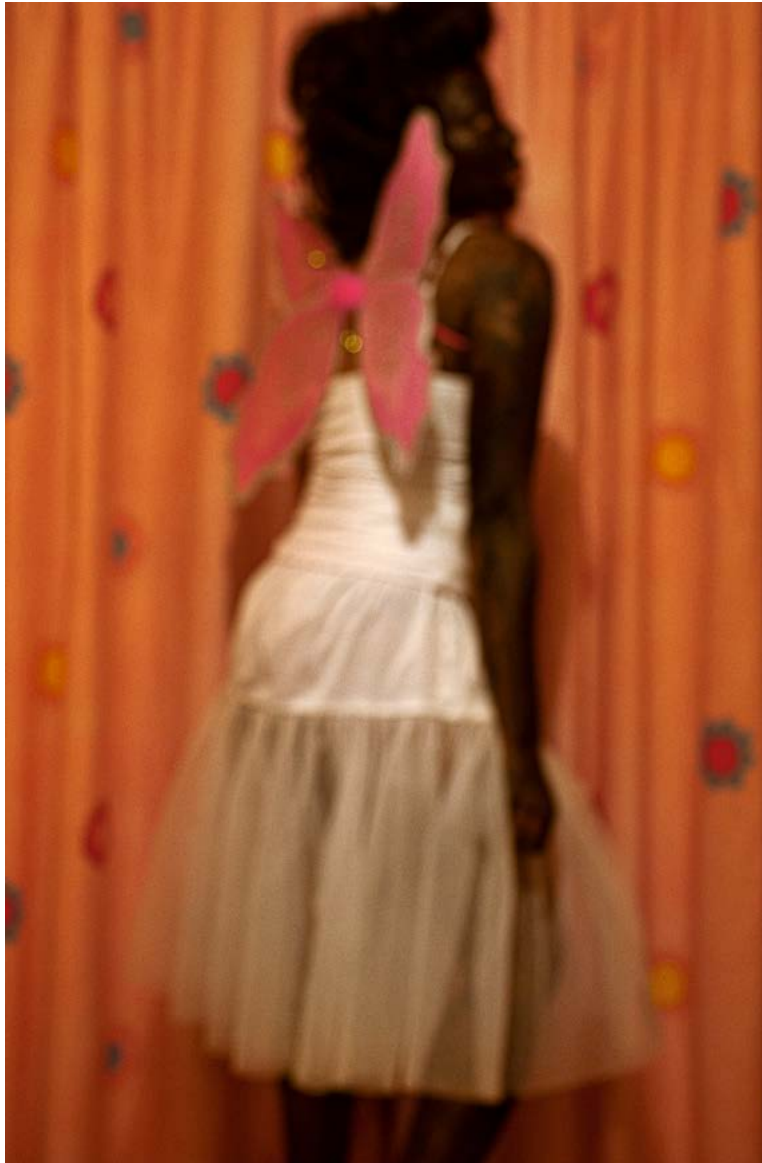


# LEBOHANG KGANYE

*B(l)ack to Fairy Tales, 2011, Photo.*

# LEBOHANG KGANYE

*B(l)ack to Fairy Tales, 2011, Photo.*



## *B(l)ack to Fairy Tales, 2011. Photography*

The German Grimm Brothers fairy tales (most especially Disney's interpretation of them) have intrinsically become part of our childhood fantasies. As a girl, I identified with fairy tale characters such as Snow White. Our annual primary school plays were about fairy tales, and I'd say, I'm Snow White and want to be her. My black skin and location became an increasing disjuncture with the fantasies I believed in. The elusive Snow White has given birth to a Snow Black.

By harnessing my performative nature in front of the camera to play Snow Black, I reference the influence of Western fairy tales and ideas of romance and happy endings which are at odds with my life growing up in a Black township. The surrealist, dream-like quality of the work sends out a harsh message on the filtering's of one's psyche and the contrasts between a forever promise of happiness and the tumults of life in South Africa, by examining performativity and role-playing as a postcolonial strategy in deconstructing colonial narratives which still inform our lives.

The work hopes to interrogate this educative influence of fairy tales as they migrate to Other contexts across the globe. The work is evidence of the political in the personal – thus personal narratives resonate with larger political and social issues and the project makes evident these intersections via an interrogation of intimate narratives.

# LEBOHANG KGANYE

*B(l)ack to Fairy Tales, 2011, Photo.*



*Untitled 01, 2011*

Inkjet on cotton rag paper (Traditional Barytalike surface / Gold Fiber Gloss), 42 x 29.7 cm  
Edition of 10 + 2AP



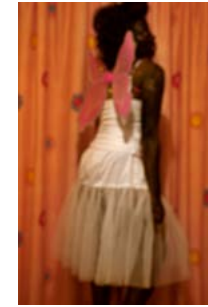
*Untitled 02, 2011*

Inkjet print on cotton rag paper (Traditional Barytalike surface / Gold Fiber Gloss), 42 x 29.7 cm  
Edition of 10 + 2AP



*Untitled 03, 2011*

Inkjet print on cotton rag paper (Traditional Barytalike surface / Gold Fiber Gloss), 59.4 x 42 cm  
Edition of 10 + 2AP



*Untitled 04, 2011*

Inkjet print on cotton rag paper (Traditional Barytalike surface / Gold Fiber Gloss), 84.1 x 59.4 cm  
Edition of 10 + 2APv



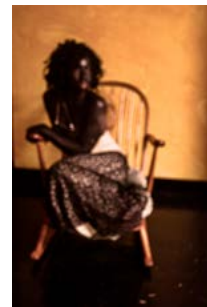
*Untitled 05, 2011*

Inkjet print on cotton rag paper (Traditional Barytalike surface / Gold Fiber Gloss), 59.4 x 84.1 cm  
Edition of 10 + 2AP



*Untitled 06, 2011*

Inkjet print on cotton rag paper (Traditional Barytalike surface / Gold Fiber Gloss), 59.4 x 42 cm  
Edition of 10 + 2AP



*Untitled 07, 2011*

Inkjet print on cotton rag paper (Traditional Barytalike surface / Gold Fiber Gloss), 42 x 29.7 cm  
Edition of 10 + 2AP



*Untitled 08, 2011*

Inkjet print on cotton rag paper (Traditional Barytalike surface / Gold Fiber Gloss), 29.7 x 42 cm  
Edition of 10 + 2AP

# LEBOHANG KGANYE

*B(l)ack to Fairy Tales, 2011, Photo.*



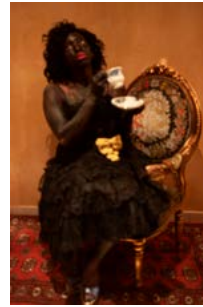
*Untitled 9, 2011*

Inkjet print on cotton rag paper (Traditional Baryta-like surface / Gold Fiber Gloss), 59.4 x 84.1 cm  
Edition of 10 + 2AP



*Untitled 10, 2011*

Inkjet print on cotton rag paper (Traditional Baryta-like surface / Gold Fiber Gloss), 59.4 x 84.1 cm  
Edition of 10 + 2AP



*Untitled 11, 2011*

Inkjet print on cotton rag paper (Traditional Baryta-like surface / Gold Fiber Gloss), 84.1 x 59.4 cm  
Edition of 10 + 2AP



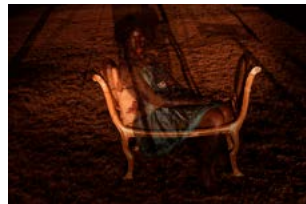
*Untitled 15, 2013*

Inkjet print on cotton rag paper (Traditional Baryta-like surface / Gold Fiber Gloss), 59.4 x 84.1 cm  
Edition of 10 + 2AP



*Untitled 20, 2013*

Inkjet print on cotton rag paper (Traditional Baryta-like surface / Gold Fiber Gloss), 42 x 29.7 cm  
Edition of 10 + 2AP



*Untitled 22, 2013*

Inkjet print on cotton rag paper (Traditional Baryta-like surface / Gold Fiber Gloss), 59.4 x 84.1 cm  
Edition of 10 + 2AP